

Draco
OF NORWAY

1900 *Suntop*

An exciting high quality sportsboat provides safe and enjoyable high speed boating. The large cockpit features seating for five, including twin quintuple action seats for the driver and co-pilot, a large sumptuous sunbed, integral swimming platform with ladder and a spacious lockable ski compartment in the bow. A thrilling agile sportsboat which you will be proud to own.



Draco

FOR THE NINETEEN NINETIES



1900 *Suntop*



2200 Topaz

This superb performance sports boat is full of new innovations and has been designed to provide fast exciting boating, the driver and co-pilot enjoy quintuple action seats for safety and comfort.

The Topaz has sleeping accommodation for two in the luxurious overnight cabin and a large cockpit with sumptuous double sunbed.



2200 Topaz



2500 *Crystal*



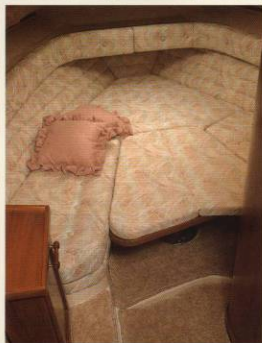
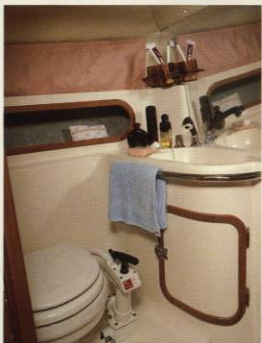
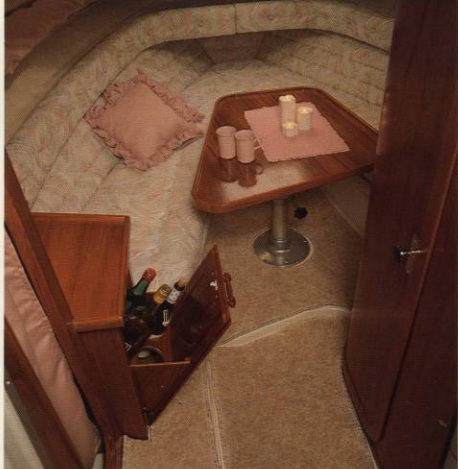
An exclusive new design, a drivers boat which provides outstanding performance, superb handling and luxurious accomodation.

The large cockpit is encompassed by the extended panoramic windscreen ensuring a feeling of security and comfort.

The galley, complete with fridge, blends in the spacious cockpit which offers a double quattro seat that quickly converts into an enormous sunbed.

Below decks the comfortable cabin converts into a luxurious berth for three, and is complimented by the exquisitely designed toilet room.

2500 *Crystal*



2700 Sterling

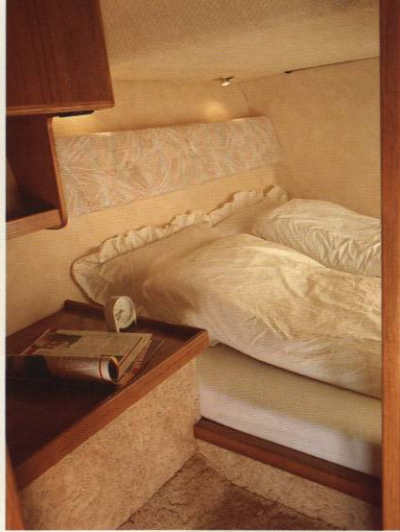


This elegant and exclusive sports cruiser is designed for extended cruising and entertaining.

The beautiful cabinet work in the main cabin emphasises the quality that is built with pride into this exceptional cruiser of the Draco range. The second luxurious cabin boasts a king sized double berth for your comfort, which is complimented by the exquisitely fitted shower room.

The well equipped galley including fridge, blends unobtrusively into the main cabin.

The exceptionally large cockpit will seat up to eight people in comfort and make up into a sunbed for three or more. The substantial cockpit door leads on to the integral swimming platform for ease of entrance from the stern. The ultimate outstanding performance sportscruiser for the 1990's.



2700 Sterling



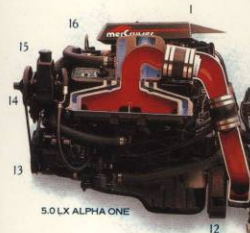
STANDARD EQUIPMENT	STANDARD AUSRÜSTUNG	STANDARD UTSTYR	1900	2200	2500	2700
Hull and deck	Rumpf und Deck	Skrog og dekk				
Handlaminated and sprayed GRP. GS gelcoat against osmose. Two coloured deck	Glasfaserverstärktes, spritz- und handlaminertes Polyester. Iso-/ortophthalsäure-Sperrschicht gegen Osmose Deck zweifarbig	Hånd- og sprøytelaminert glassfiberarmert polyester. Osrosebestandig GS-gelcoat. Tofarget dekk	● ●	● ●	● ●	● ●
Fenderliet in gray PVC Decor stripes Double fairleads	Solide umlaufende Scheuerleiste in graues PVC. Mehrfarbige Dekorstreifen 2 Lipplüsen am Bug	Solid fenderliet i grå PVC. Dekor-striper 2 føringsbeslag på baug.	● ●	● -	● -	● -
Solid clamps Antiskid on decksides	Grosse Klampen vorn und achtern Anti-Rutschstruktur an den Gangborden	Solide forføyningsbeslag. Antiskioverflate på dekkssider.	●	●	●	●
Teakrail in cockpit Stainless steel handrail on windshield Bowhook	Teakleisten auf dem Cockpitrand Nirosa-Handläufe an den Scheibenrahmen Bugauge	Teakbelegg rundt cockpit Syrefast håndtak på vindskjerm Baugkrok	- ●	- ●	- ●	● ●
2 heck U-bolts Waterski hook Selfbailing anchor compt.	2 Augbolzen am Heck Wasserskise mittschiffs achtern Selbstlensender Ankerkasten	2 akterkroker Vannskikrok Selvlensende ankerbrønn	● - -	● ● ●	● ● ●	● - -
Incorporated GRP platform Waterski compartment Cockpitdoor to platform Targa arch	Integrierter Badesteg Wasserski Stauraum Cockpitdør zum Badesteg Targa-Bügel	Integert badeplattform Vannski stuerom Cockpitdør til plattform Targabøyle	● - -	● - -	● - -	● ● ●
Windshields and hatches	Scheiben und Luken	Vindskjerm og luker				
Curved panorama windshield in clear safetyglass Anodised windshield frames Cabin hatches with acrylicglass Portholes in sleeping cabin	Panorama-Windschutzscheibe aus Sekuritglas Rahmen aus eloxiertem Aluminium Kabinekluk aus Acrylglas Klapp-Bullaugen in Unterflurkabine	Buet panorama vindskjerm i klart herdet glass Elokserte vindskjermrammer Kabinluke med acrylglas Lufteluker i sovekabin	● - -	● ● -	● ● -	● ● ●
Cockpit	Cockpit	Cockpit				
Cockpit flooring w/alum. lists. Cockpit storage under seats Cockpit storage under floor Adjustable dining table	Cockpitboden mit Alu-Leisten eingefasst Cockpit Staufächer unter den Sitzen Staufächer unten am Boden Höhenverstellbarer Cockpittisch	Cockpitdørk m/alum. lister Stuerom under cockpitseter Stuerom under dørk Nedfellbart cockpitbord	● - -	● ● -	● ● -	● - -
Extra cushion for table Sun platform Adjustable double pilotseat Quintuple action seat	Tischpolster für Sonnenliege Sonnenliege Verstellbar Doppelfahrersitz Verstellbare "Action"-Sitzen	Utyfyllingspute for bord Solplattform Justerbar dobbel førersto Justerbare "action"-seter	- ●	- ●	- ●	● ●
Convertible backrest Cockpit U-sofa Grab rail at copilot chair Lockable glove compt. Maptable with cover	Verstellbare Rückenlehne Cockpit U-Sitzgruppe Haltegriff für Belfahrer Abschließbares Handschuhfach Spritzwassergeschützte Kartenablage	Nedfellbar seterygg Cockpit U-sofa Håndtak ved copilotsete Låsbar hanskerom Kartbord med beskyttelsesplate	- ● ● ●	- ● ● ●	● - - -	- - - ●
Pantry in cockpit Glass holders Stern shower GT-wheel Adjustable steering wheel	Pantry im Cockpit Glashefter Heckdusche Griffiges Sportlenkrad Verstellbares Sportlenkrad	Utvendig pantry i cockpit Glassholdere Hekkdusj GT-ratt Justerbart ratt	- ● - -	- ● ● ●	● ● ● ●	● - - -
Self bailing cockpit	Selbstlenzendes Cockpit	Selvlensende Cockpit	-	-	-	●

DRACO A/S reserve the rights to change specifications, standards and colours without notice.

Cabin	Kabine	Kabin	1900	2200	2500	2700
Complete colormatched upholstery Cabin carpet Curtains Adjustable cabin table	Kompl. farblich abgestimmte Polsterung Kabinenteppich Vorhänge Kabinentisch in der Höhe verstellbar	Kompl. fargevstemt polstring Kabinteppet Gardiner Justerbart kabinbord	- - - -	● - - -	● ● ● ●	● ● ● ●
U-sofa in main cabin Hinged backrest in main cabin Storage room under seats Bar with bottle- and glassholders	U-Sitzgruppe im Vorschiff Aufklappbare Rückenlehnen im Vorschiff Stauräume unterhalb der Sitzbänke Barfach mit Glas- und Flaschenhaltern	U-sofa i hovedkabin Svingbar rygg i hovedkabin Stuerom under seter Bar med flaske- og glassholdere	- - - -	- - ● -	● - ● ●	● ● ● ●
Wardrobe Separate sleeping cabin with double beds Separate toiletroom Inside pantry with drawers/overhead locker	Kleiderschrank Separater Schlafkabine mit Doppelbett Separater Toilettenraum Pantry mit Besteckschublade/Schränken	Kleeskap Separat sovekabin med dobbelkøye Separat toalettrom Pentry med skuffseksjon/overskap	- - - -	- - - -	● - ● -	● ● ● ●
Stove with 2 closed burners Refrigerator 42 L Pantry blower Sink	Geschlossenes Doppelkocher Kühlschrank 42 L Dunstabzug Spüle	Dobbel, lukket kokeapparat Kjøleskap 42 L Pentry ventilator Vask	- - - -	- - - -	● - ● -	● ● ● ●
Toilet ventilator Mirror Chemical toilet WC	Toilettenraum entlüftung Spiegel Chemie-WC Seetoilette	Ventilasjonsvlifte i toalettrom Speil Porta Potti Toalett WC	- - - -	- - - -	● - - -	● - - -
Shower in toiletroom Complete cabin lights	Dusch im Toilettenraum Komplette Innenbeleuchtung	Dusj i toalettrom Komplett kabinbelysning	- -	- -	- -	● ●
Engine- and tankcompt.	Motorraum und Tankraum	Motor- og tankrom				
Insulation w/antiabsorbing fabric Oak laminated engine beds Halon fire extinguisher system for tank- and engine Tank- and engine ventilation system	Schallsolisierung schwer entflammbar Eich einlinierte Motorfundamente Halonlöschanlage für Tank- und Motorraum Tank- und Motorraum-Ventilation	Motorisolasjon med anti absorberingsoverflate Motorfundamenter i innlaminert eik Halon anlegg for tank- og motorrom Tank og motorroms ventilasjon	● ● ● ●	● ● ● ●	● ● ● ●	● ● ● ●
Tank cleaning cover Fuel stop cock Hand bilgepump Electric bilge pump	Reinigungsluke im Tank Treibstoffstopperhahn Hand lenzpumpe Elektrische Lenzpumpe	Rengjeringssluke på tank Brennstoff stengekran Hånd lensepumpe Elektrisk lensepumpe	● ● ● ●	● ● ● ●	● ● ● ●	● ● ● ●
Technical and electrical equipment	Technik und Elektrik	Teknisk- elektrisk utstyr				
Instrument lights Tachometer Temp indicator Voltmeter	Instrumentenbeleuchtung Drehzahlmesser Temperaturanzeige Voltmeter	Instrumentbelysning Turteller Temperaturmåler Voltmeter	● ● ● ●	● ● ● ●	● ● ● ●	● ● ● ●
Oil press. indicator Fuel tank indicator Hour counter Chronometer	Öldrückanzeige Tankanzeige Betriebsstundenzähler Zeituhr	Oljetrykkmåler Tankmåler Timeteller Klokke	● ● ● ●	● ● ● ●	● ● ● ●	● ● ● ●
Speedometer Cig. lighter Windshield wiper Compl. nav. lights	Geschwindigkeitsmesser Zig. Anzünder Scheibenwischer DHI geprüfte Beleuchtung	Fartsmåler Sig. lighter Vindskvisker Kompl. lanterner	● ● ● ●	● ● ● ●	● ● ● ●	● ● ● ●
Automatic fuses Power steering	Automatsicherungen Servolenkung	Automatsikringer Servostyring	● -	● -	● -	● -
General equipment by DNV-standard	Allgemein Ausrüstung laut DNV-standard	Generelt utstyr i.h.t. DNV-standard				
Pulpit Platform w/ladder Canopy Transport cover Transport cradle	Bugreling Badesteg mit Leiter Camperverdeck Transportplane Transportgestell	Pulpit Plattform med stige Kalesje Transportpreserining Transportkrybbe	- ● ● ● ●	● ● ● ● ●	● ● ● ● ●	● ● ● ● ●

PRECISE THINKING PRECISE MACHINES

- 1** Thunderbolt IV[®] Hi-Energy Ignition features fewer moving parts for less maintenance, faster starts, better performance, enhanced fuel efficiency.
- 2** Direct acting power steering for better response and maneuverability on plane and when docking.
- 3** Trim limit switch prevents overtrimming that may damage the drive and can be preset to the optimum trim position.



5.0 LX ALPHA ONE

- 9** Industry leading gearcase hydrodynamics lower drag coefficient for added performance, including improved acceleration and top-end speed.
- 10** Innovative acceleration plate works with Power Trim XD to get boat up on plane faster for better performance and fuel economy.
- 11** Complete stainless steel grounding system helps prevent drive unit corrosion by bonding all underwater components together so zinc anodes can protect them.
- 12** Sealed flywheel housing protects starter from bilge water damage.
- 13** A 55 amp alternator puts a full charge to the battery for more dependable starts as well as power to spare for marine accessories.



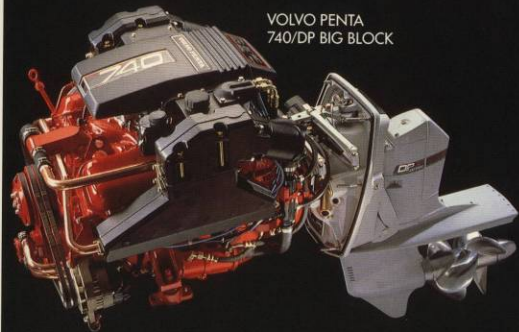
- 4** Power Trim[®] XD features large hydraulic cylinders for faster response enhanced impact protection and improved corrosion resistance. Built-in memory returns drive unit to preset trim position after impact with a submerged object.
- 5** Jet Prop[®] Exhaust vents exhaust gases underwater through prop hub. Better power and efficiency. Less noise.
- 6** Special propshaft seal protects drive system from damage caused by fishing line.
- 7** Stronger internal components and advanced near net shaped gears for durability and impact protection.
- 8** Drive system is made from XK 360 marine aluminium, with the lowest copper content of any stern drive manufacturer for superior corrosion resistance.

- 14** A 50 amp circuit breaker protects the electrical system against overloads and eliminates the need for fuses.
- 15** Special water-separating fuel filter helps avoid engine problems by eliminating water and solid particles.
- 16** PlusPower[™] Exhaust reduces back pressure, enhances useable power and improves fuel economy. Exhaust elbows have consistent wall thickness to enhance corrosion resistance.



VOLVO PENTA DUOPROP

— A REVOLUTIONARY STERN DRIVE UNIT



VOLVO PENTA
740/DP BIG BLOCK

- BETTER ACCELERATION
- ALWAYS GRIPS THE WATER
- LOWER FUEL-CONSUMPTION
- INCREASED TOP-SPEED
- LESS NOISE AND VIBRATION

VOLVO PENTA DUOPROP

Draco

OF NORWAY

1900 Suntop

LOA 5,9 m 16ft 9in
Beam 2,2 m 7ft 2in
Weight w/4-cyl. eng. 1100 kgs 2422 lbs
Fuel capacity 150 liter 33 imp Gallon
Designer: Draco A/S

2200 Topaz

LOA 6,8 m 22ft 3in
Beam 2,3 m 7ft 6in
Weight w/V8-eng. 1600 kgs 3307 lbs
Fuel capacity 200 liter 44 imp Gallon
Designer: Hans J. Johnsen/Draco A/S



2500 Crystal

LOA 7,8 m 25ft 6in
Beam 2,6 m 8ft 5in
Weight w/V8-eng. 2200 kgs 4846 lbs
Fuel capacity 280 liter 62 imp Gallon
Water capacity 60 liter 13 imp Gallon
Designer: Hans J. Johnsen/Draco A/S

2700 Sterling

LOA 9,0 m 29ft 5in
Beam 2,85 m 9ft 4in
Weight w/twin V6-eng. 3130 kgs 6894 lbs
Fuel capacity 375 liter 83 imp Gallon
Water capacity 90 liter 20 imp Gallon
Designer: Jan H. Linge

DRACO A/S

P.O. Box 114, N-4401 Flekkefjord, Norway - Tel 47-43-23155
Fax 47-43-24667 - Telex 21693

AGENT/DEALER